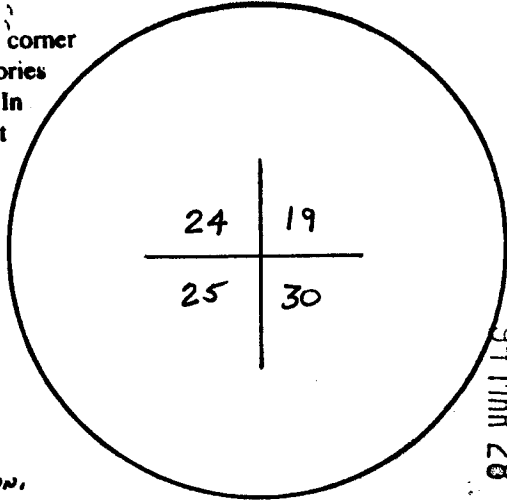


Wyoming Certified Land Corner Recordation Certificate

This form is to be completed in accordance with W.S. 36-11-101, printed in black ink or typed, and shall be for one individual corner.

Describe below, or show in sketch attached to this form, the corner evidence found. Include condition and type of monument, accessories and ties. Describe any maintenance or rehabilitation performed. In the circle to the right, show monument inscription. If monument is determined lost or obliterated, restate the GLO or BLM original field note record; describe or show the procedure used to reestablish the corner and all data as above for a found monument.



Field Date 15 JUN 90 Office Reference 2130

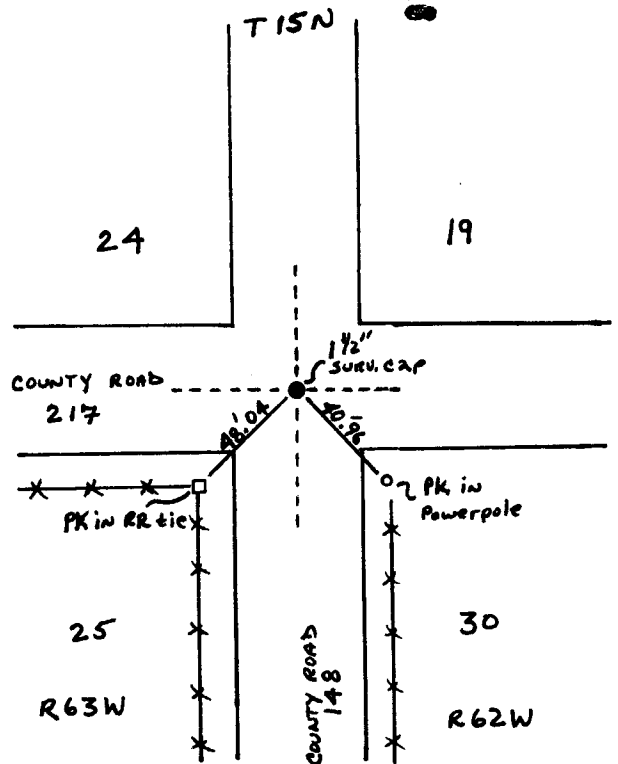
EVIDENCE FOUND: Found rebar with a 1 1/2" sur. cap stamped 24/19, No LS number & origin unknown, 25/30

GLO RECORD:

MONUMENT SET: None

REFERENCE POINTS SET: Set PK nails in the Southeast power pole & a R.R. tie to the southwest. (See sketch)

Monument Inscription
LOCATION SKETCH



RECEIVED
 LARAMIE COUNTY
 CHEYENNE, WY.
 138967
 94 MAR 28 PM 2 10

State of Wyoming
Office of County Clerk
County of _____

This Certified Land Corner Recordation Certificate was filed for record on the _____ day of _____, 19 ____, in Book No. T 15N, R 62W, on Alpha-Numeric coordinates R-1 and was noted on the Cross Index Plat.

County Clerk _____
 Corner Type: Aliquot Corner Other _____
 Section(s) 24/19 Meridian 6th
25/30
 Corner Name Section corner Township T15N Range R62W Page _____

Sheet 1 of 1

